



ARCHITECTURE AND INTERIORS INTERNATIONAL PANORAMA

❖ Furniture ❖ Tiles & Ceramics ❖ Decorative Lighting ❖ Bath & Sanitation
❖ Floor & Wall Coverings ❖ Home Automation ❖ Kitchen Technologies ❖ Landscape



18-21.08
JAKARTA INTERNATIONAL EXPO

Redefine the furniture expo
Inspire the furniture manufacturers
more Innovation



India's
Leading
Architecture &
Interiors
Magazine

THE WAIT IS OVER!

**IFEX, Indonesia's biggest
and most innovative
furniture exhibition
is back on your calendar.**

Tired of virtual event?

Yes, we do! The last 2 years situation has been struggling for all industries, but the fact is Indonesia's furniture export was growing rapidly. Such a moment! In this year, IFEX is back on physical event to support your business. We connect you with our specialty furniture and signature products.

Worries of travel restriction?

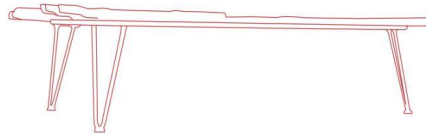
The Government of The Republic of Indonesia has lifted all QUARANTINE REQUIREMENTS, all foreigners DO NOT NEED QUARANTINE upon arrival makes the business better and bigger. You only need to see if your country already have VoA facility to enter Indonesia : <https://bit.ly/ListofCountry>

Mandatory for Foreign Visitor to Visit IFEX 2022!

For your upcoming visit to Indonesia, you are required to comply with policies set by Indonesian Government. Please refer to the information on this link: <https://bit.ly/3zNZDB5>

**Please be note, we are in a
rush with time! No more time
to waste!**

This is the perfect timing for you to do business with Indonesia's signature products. We create a perfect combination between uniqueness, innovation and technology produces high quality furniture product at IFEX Indonesia. The perfect blending between them creates local product for international standard.



**The moment is yours.
Do it now or never!**

You create your own moment on this furniture event. Secure your ID Badge by doing the pre-register through: <https://ifexindonesia.com/> and verify your email without any further consideration. There will be such a perfect time to do business with **IFEX 2022 August Edition!**



Hosted by :



- Kids Corner- ARCEDO
- Handcrafted Furniture
- Interiors By Tanisha Bansal
- The Orange Edit- Normann Copenhagen
- Tips for Lighting Up A Dark Room
- Carpet Edition Collection of Rugs
- Fairs

Read The Previous Edition of Architecture and Interiors International Panorama Magazine by scanning the QR code!



Distribution :

- IFEX, Jakarta, Indonesia
- TECNA, Rimini, Italy
- Marmomac, Verona, Italy
- SICAM, Pordenone, Italy



AMARA BY LODHA

An effortless blend of modernity and elegance

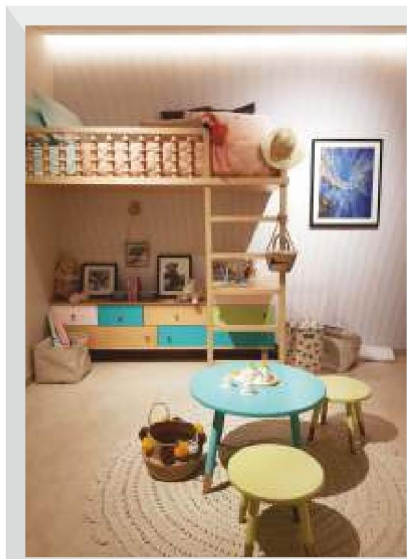


Located at a prime location in central Thane, Amara by Lodha offers spacious apartments sprawling luxury enclave of magnificent apartments, elevating the contemporary lifestyle. It is conveniently close to the buzzing places in Thane and enjoys proximity to several IT and corporate offices. Amara is meticulously designed with unbound convenience and the best of amenities. These residential apartments offer the kind of life that rejuvenates you and inspires you to live life to the fullest.

The brief for the lighting design was to provide

luminaries as per the lighting designer's requirement. In addition, the requirement was to use aesthetic and appealing fixtures that would act as an additive solution to the design. ILDL, from its wide range of exclusive brands, used fixtures from Orluna and Litolux to meet the intent. LED strips were used in the cove to define the verticality of the space, making the room look spacious and vibrant. Downlights were used to accentuate the artworks present in the space on the wall. Additionally, linear LED lines were used to frame the artistic elements through lighting.





About ILDL

Established in 2006, ILDL started with an ideology to translate lateral thinking into actionable processes by improving existing techniques and providing value-added services to customers.

Representing 23+ brands worldwide, the company has created a virtual lighting think-tank, inspiring people and transforming spaces with light.

With a close-knit and committed design team, ILDL delivers illuminating solutions that are functional, user-centric, and tailored to individual needs. Ranging from conceptualising to procurement to execution, ILDL's extensive experience and vast list of brand collaborations have found a confidante in prominent architects, interior designers, and lighting designers. ILDL's extraordinary portfolio of over 500 projects consists of residential, commercial, healthcare, heritage, and landscape projects spread across South and South-East Asia.

